



Streamlining Logistics:Unlocking Romania's E-Transport Revolution

Discover essential information about the process!



Speakers



Serra Emekli
Account Specialist, SNI

Serra Emekli is an Account Specialist. She is responsible for international account management, focused on conducting SAP projects all around the world.



Cansu Gölpınar
Regulatory Affairs Associate,
SNI

Cansu Gölpınar is a Regulatory Affairs Associate. She is diligently following the regulatory updates all around the world and working closely with the Business and Development teams as well as the Sales team.

Agenda



Introduction to SNI

General Information About the RO e-Transport System

Highlights of the e-Transport Regulation in Romania

Key points of the scope and the implementation

How does the system work?

How can SNI help you?

About SNI



Founded in
2006



~150
employees



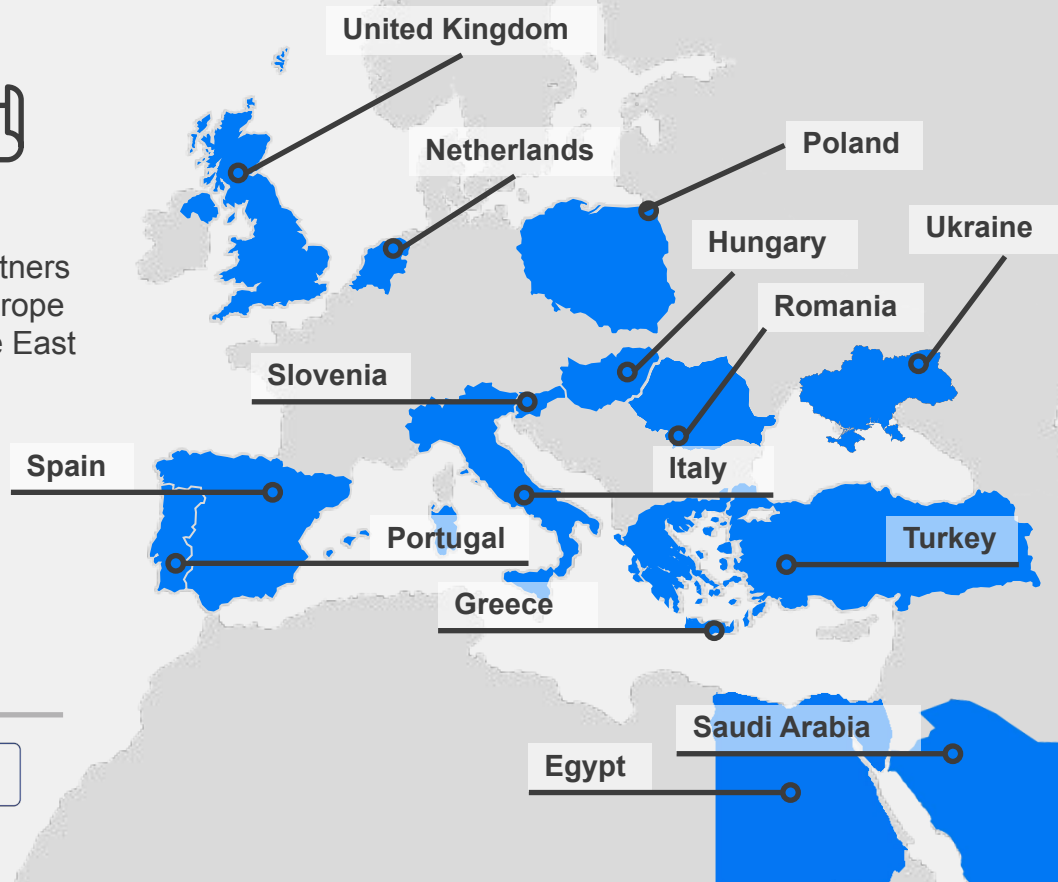
12
offices/partners
across Europe
and Middle East



30+
country
solutions

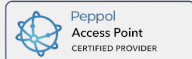


1000+
clients
(85% *multinationals*)



500

Technology Fast 500
2016 EMEA



SNI Worldwide



—
Our products are used by businesses
across the globe



Our Clients



FERRERO



GUESS

dyson

Prysmian
Group

■ GEBERIT



Honeywell

signify

ADIANT

beko

Autoliv

FUJIFILM

VESTEL

CONAIR



B | BRAUN

Otokar





General Information about RO e-Transport



Purpose

- Control road transportation of high fiscal risk goods and international goods in Romania.
- Reduce tax evasion, narrow VAT gap, and prevent illegal trade.

Process

- Electronic notification to the national RO e-Transport platform in XML format.
- Sender and recipient of the goods.
- Description and worth transported goods.
- Loading and unloading locations.
- Type of transportation details.



Highlights of the e-Transport Regulation in Romania



Key Points of the Scope and the Implementation



- It came into force for goods with high fiscal risk in January 1, 2023.
- New legislation came into force in January extending the scope.
- Starting from July 1, 2024, applicable to transports of merchandise meeting the following conditions.
 - Trailers weighing more than 2.5 tons.
 - Goods weighing more than 500 kg.
 - Value of goods exceeding 10,000 RON (about 2,000 EUR).

Who Declares?

Transportation of the goods related to international transport:

- Consignee or the consignor
- Romanian consignee
- Romanian supplier
- Warehouse owner

Transportation of high fiscal risk goods

- The Romanian supplier
- The economic operator

High Fiscal Risk Products

- Vegetables, fruits, roots, alcoholic beverages, mineral products, clothing, footwear and etc.
- New categories are added by March 2024.
- Weight and value specificity.

Transportation of high fiscal risk goods in the following contexts

- Between two locations within Romania.
- Intra-community acquisitions.
- Intra-community deliveries.
- Imports and Exports.
- Intra-community transactions with goods in transit in Romania.

UIT Code

- Unique Identification Transport
- Details of the means of transport used are recorded in the system.
- Declared via Private Virtual Space.
- Ro Inbound- RO Outbound
- 3 calendar days before start of transport. Valid for 5 and 15 days from the reported transportation date.
- No extension is possible.

Penalties for Non-compliance



- Incomplete declarations
 - Expired UIT Code Usage
 - Unauthorized unloading
 - Incorrect quantity declarations
- Sanctioned with a fine from **10,000 lei to 50,000 lei** in the case of natural persons or with a fine from **20,000 lei to 100,000 lei** in the case of legal persons, as well as confiscation of the value of the undeclared goods.
- Penalties will come into effect in January 2025.



How does the system work?



RO e-Transport System Specifications

- Portal called Space Private Virtual (SPV) and API are used in both e-Invoicing and e-Transport System.
- Digital certificate is required for registering SPV.
- The uploaded file must be in XML format.
- The declaration in the RO e-transport system will create a unique UIT number which needs to be communicated to all involved parties (carrier, buyer/seller, distributor). It will be declared via SPV.
- UIT code is sign of validation.

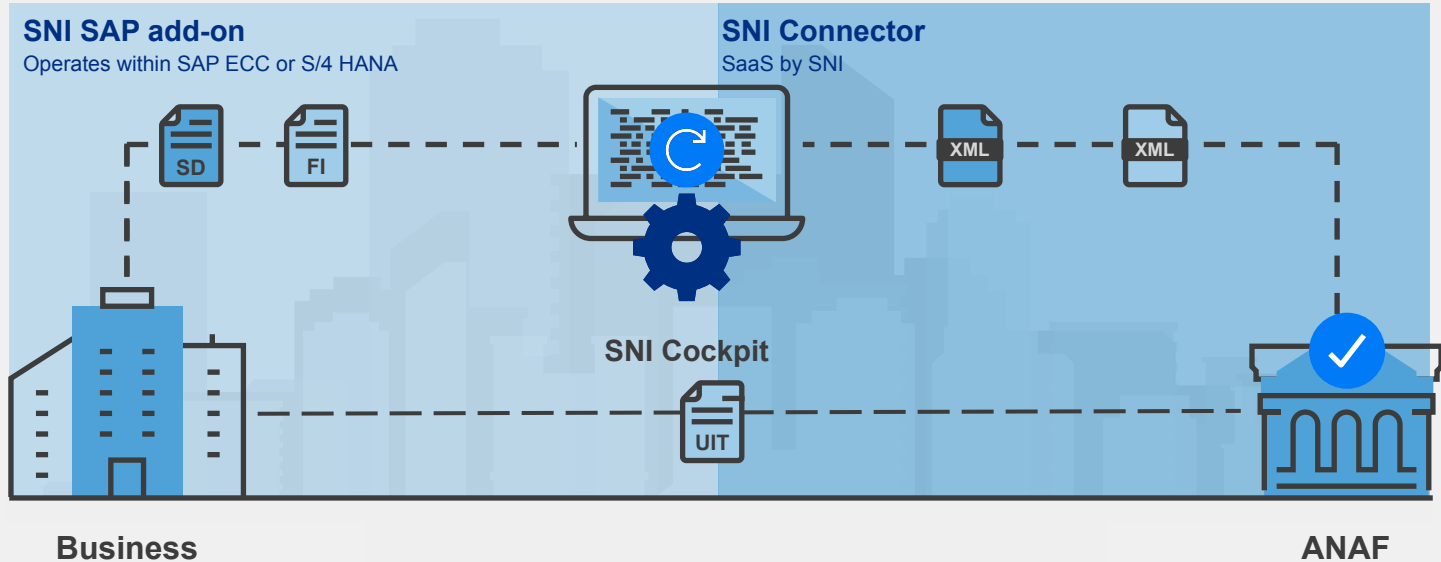
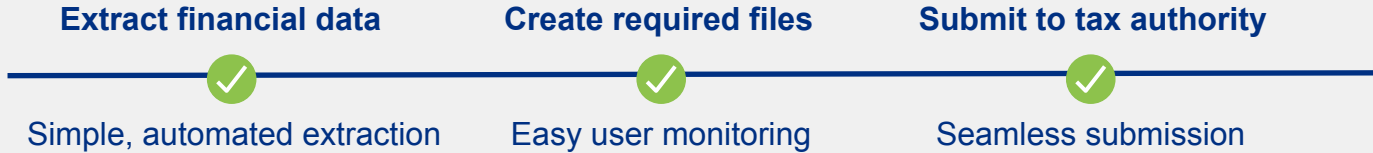


sni

How can SNI help you?

Romania e-Transport

SNI SAP Add-On



Romania e-Transport

e-Doc Suite



Extract financial data



With external template

Create required files

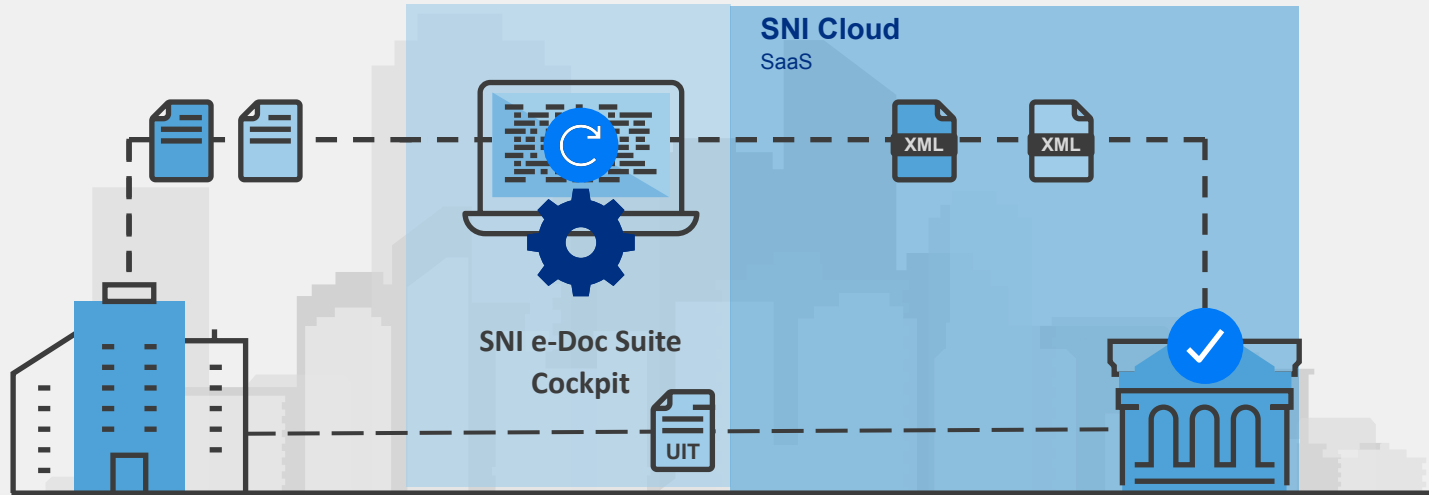


Easy user monitoring

Submit to tax authority



Seamless submission



Business

ERP (Oracle, Microsoft Dynamics,
etc.)

POS systems and devices

Governments

Communication

e-Doc Suite



Extract financial data

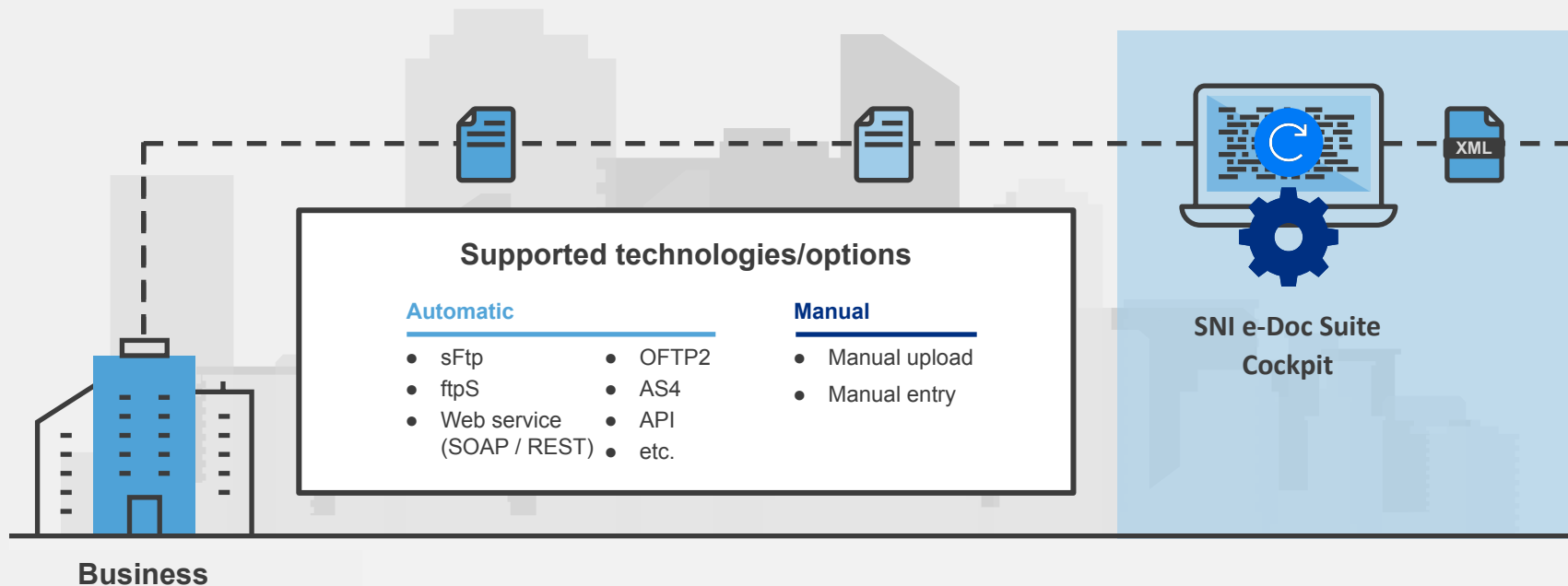


With external template

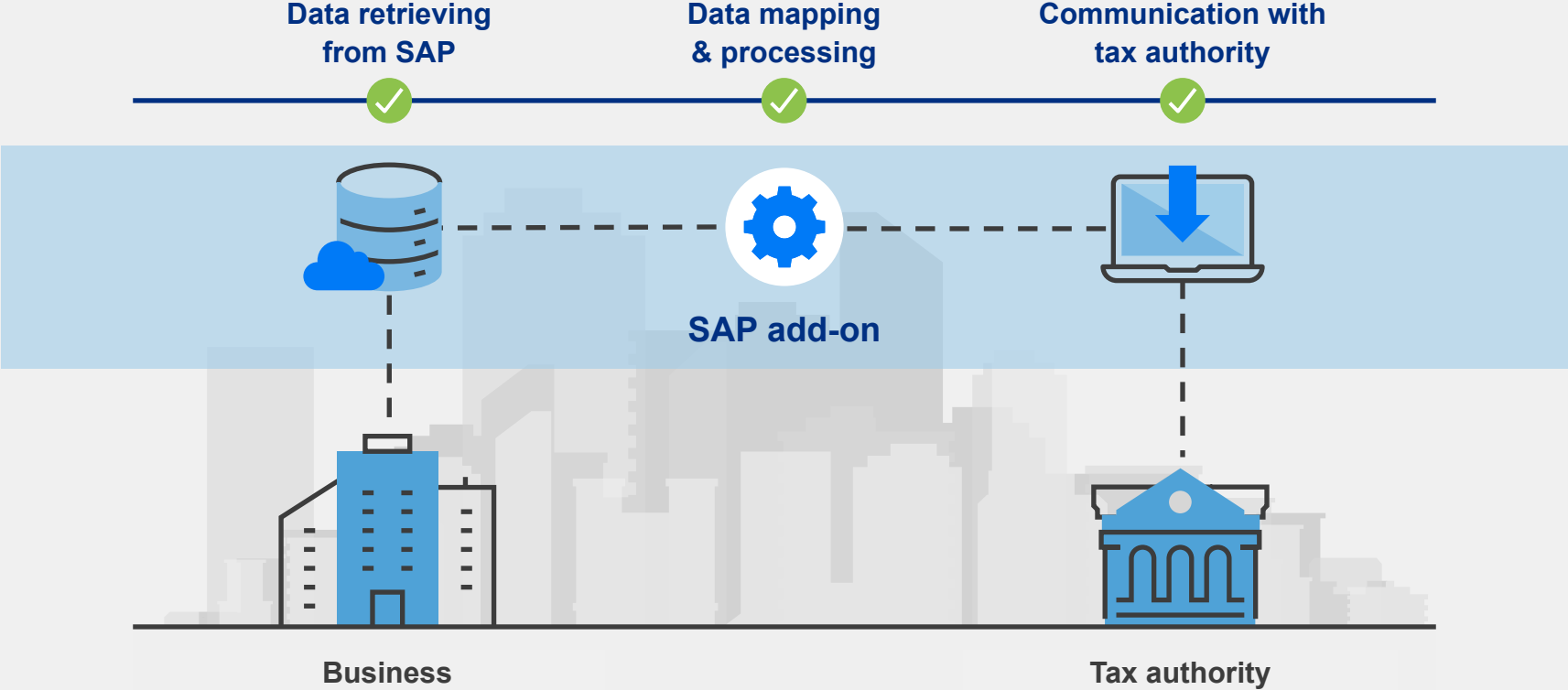
Create required files



Simple user monitoring



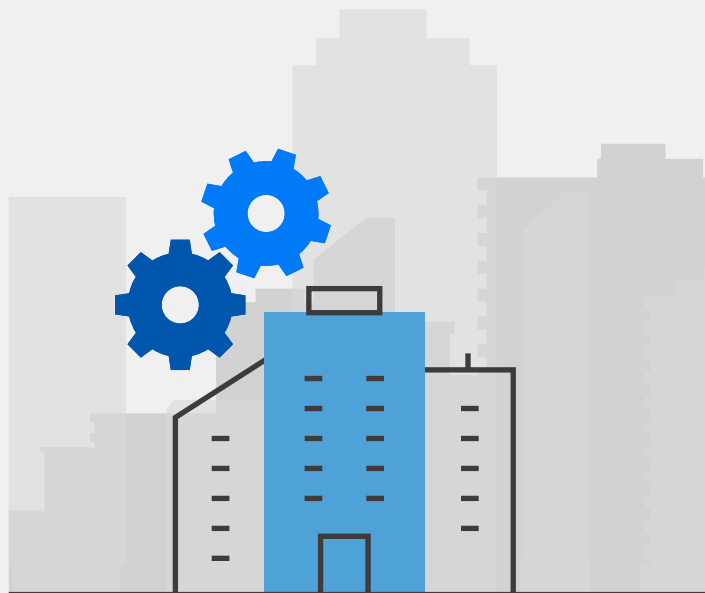
An end to end solution



SAP users



Easy integration into your existing systems and infrastructure



Simple

Fast integration without installing SAP OSS notes



Efficient

Cost-effective implementation without employing an external consultant



Accessible

No version upgrade required

*SNI add-ons support ECC 4.7 and Higher R3 Versions
*SNI SAP add-ons run on SAP R3 and S4



Reliable

All SNI add-ons are **SAP® Certified**
Powered by SAP NetWeaver®



Cycle of Benefits



Ongoing **support**



Initial
**implementation, training
& documentation**



**Maintenance &
regulatory updates**



**Liaising with tax
authorities to keep
you informed**



SNI provide continuous support for a **long term relationship**

Worldwide Solutions



SAF-T & VAT Reporting

Austria SAF-T
France FEC
Hungary RFHUAUDIT
Lithuania SAF-T
Luxembourg FAIA
Norway SAF-T
Poland JPK VDEK
Portugal SAF-T
Romania SAF-T
Turkey e-Ledger
UK Making Tax Digital

e-Invoicing

AP Automation (SAP Add On)
Belgium e-Invoice
Chile e-Invoice
Egypt e-Invoicing
Egypt e-Receipt
France e-Invoice
Germany ZUGFeRD
Germany X-Rechnung
Vietnam e-Invoice
Indonesia e-Faktur
Israel e-Invoice
Italy FatturaPA
Japan e-Invoice
Kazakhstan e-Invoice
Kazakhstan e-Waybill

Malaysia e-Invois
Mexico e-Invoice
Peru e-Invoice
Poland e-Faktur
Romania e-Factura
Romania e-Transport
Saudi Arabia e-Invoice
Serbia e-Faktura
South Korea e-Invoice
Thailand e-Invoice
Turkey e-Invoice
Turkey e-Waybill

Invoice Reporting

Greece myDATA
Hungary RTIR
Spain SII
Turkey e-Archive

Other Services

Egypt e-Signature
GEKAP
Poland Whitelist
Portugal QR & ATCUD Code
Tax Determination
Turkey e-Accounting Receipt
Turkey e-Note of Expenses
Turkey e-Producer Receipt
Turkey e-Reconciliation
VAT Number Validation
VIES

Solutions & Roadmap



-  August Malaysia B2B e-Invoice, Mandatory
-  July Denmark Accounting Report, Mandatory
-  July Romania e-Transport, Mandatory
-  July Denmark Digital Bookkeeping Act, (Mandatory)
-  Greece e-Delivery, Mandatory

-  Spain B2B e-Invoice, Mandatory (TBC)
-  Estonia B2B e-Invoice, Mandatory (TBC)
-  Oman B2B e-Invoice, Mandatory (TBC)
-  Slovakia B2G e-Invoice, Mandatory (TBC)
-  UAE e-Invoice, Pilot (TBC)

Q3-Q4 2024

Q1-Q2 2025

Q3-Q4 2025

2026-2027

-  January Ukraine SAF-T, Mandatory
-  United States e-Invoice, Pilot
-  Latvia B2G e-Invoice, Mandatory
-  January Germany B2B e-Invoice, Mandatory (Receiving)
-  January Israel B2B e-Invoice, Mandatory
-  China B2B e-Invoice, Mandatory
-  January Romania B2C e-Invoice, Mandatory
-  January Portugal SAF-T Accounting, Mandatory

-  France B2B e-Invoice, Mandatory
-  Slovenia B2B e-Invoice, Mandatory (TBC)
-  Denmark B2B e-Invoice, Mandatory
-  Belgium B2B e-Invoice, Mandatory
-  Poland B2B e-Invoice, Mandatory
-  Germany B2B e-Invoice, Mandatory
-  Latvia B2B e-Invoice, Mandatory

sni



A panoramic view of a city skyline at dusk, featuring several prominent skyscrapers with illuminated windows and glass facades. The sky is a deep blue, and the city lights are beginning to glow.

sni

Thank you



+90 212 909 1664



snitechnology.net



[snitechnology](https://www.linkedin.com/company/snitechnology)



contact@snitechnology.net